

# Welcome to the University of Oxford

For more than 800 years colleges and halls have existed around the city of Oxford. They began as medieval halls of residence for students under the supervision of a

Master. The oldest colleges, University, Balliol and Merton, were founded in the late 13th century. Green Templeton College is the newest and was established in 2008. Today, the 38 colleges and six permanent private halls are related to the University in a type of federal system.

Colleges and halls are communities in which students live and study. They are the main focus of their everyday lives. The college is responsible for students' academic progress through the tutorial system, and for their welfare. Each has its own sports facilities and teams. In addition, there is the opportunity to join University teams and take part in competitions such as the world-famous Boat Race.

Each college offers most of the subjects taught at the University, so at any college there will be students studying different subjects such as law, medicine and maths.

All colleges accept male and female students. All Souls is primarily an academic research institution and has no undergraduates. Harris Manchester recruits mature students. Kellogg, Linacre, Nuffield, St Antony's, St Cross, Wolfson and Green Templeton admit only graduate students.

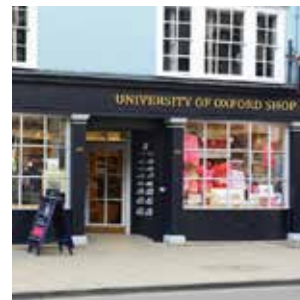
The Department for Continuing Education offers more than 1,000 short or part-time study courses. Students can study in Oxford, in the region or online, for pleasure and/or for an Oxford qualification. For more information about lifelong learning at Oxford, you can pick up a prospectus from Rewley House, Wellington Square or telephone 01865 270360.

## Disabled Access



Many of our buildings are very old. We are making reasonable adjustments wherever possible to improve accessibility. The Access Guide at [www.admin.ox.ac.uk/access](http://www.admin.ox.ac.uk/access) provides information about accessibility, but to make the most of your visit we suggest you contact individual locations directly.

## The Official University Shop



106 High Street,  
Oxford OX1 4BW  
[www.oushop.com](http://www.oushop.com)

## Find the perfect venue in Oxford



Conference Oxford is the official conference and event marketing office for the University of Oxford and its Colleges, offering a free venue search amongst 63 member venues. Dedicated to finding you the perfect venue, we also offer help and advice on planning your conference or event.



The Colleges and the University of Oxford provide outstanding facilities for day meetings, residential conferences, celebratory dinners, parties and weddings.



Please visit our website for further information:  
[www.conference-oxford.com](http://www.conference-oxford.com)



### Get in touch

Tel: 01865 276 190

Email: [enquiries@conference-oxford.ox.ac.uk](mailto:enquiries@conference-oxford.ox.ac.uk)

Produced by the University of Oxford News and Information Office,  
University Offices, Wellington Square, Oxford OX1 2JD Tel: 01865 270010  
[www.ox.ac.uk/visitors](http://www.ox.ac.uk/visitors) March 2017

Pictures from: [ouimages.com/SilviaMunueraMoreno/WhitakerStudio](http://ouimages.com/SilviaMunueraMoreno/WhitakerStudio)  
Cover: [ouimages.com/JamesWhitaker](http://ouimages.com/JamesWhitaker)



FREE OFFICIAL MAP

# EXPLORE

THE UNIVERSITY OF OXFORD





Oxford is a beautiful city of stunning architecture, history and culture. You'll find ancient and modern colleges, fascinating museums and galleries, and plenty of parks, gardens and green spaces in which to relax. Plus, the city centre is small enough to cover on foot, and only a few minutes' walk from the main rail and coach stations.

# Visitor Information Centre

**N** See map

Tourist information, accommodation service, tickets, guided walking tours, what's on, maps, guides, souvenirs, bureau de change.  
*Please note the Visitor Information Centre is not part of the University.*



**Opening times:**  
 Monday to Saturday: 9.30–17.00  
 Sundays and Bank Holidays: 10.00–15.30  
 15–16 Broad Street, Oxford OX1 3AS  
 Tel: 01865 686430  
 Email: [info@experienceoxfordshire.org](mailto:info@experienceoxfordshire.org)  
[www.experienceoxfordshire.org](http://www.experienceoxfordshire.org)






**Best of both...**  
 Benefit from **fine quality print** along with **'in-house' competitive print rates**.  
 Oxuniprint is a wholly owned subsidiary of Oxford University Press and delivers a professional commercial print service.



Unit 10 Oxonian Park, Langford Locks, Kidlington, Oxfordshire OX5 1FP • Telephone: 01865 514691  
[Oxuniprint.Enquiries@oup.com](mailto:Oxuniprint.Enquiries@oup.com)

Explore the University of Oxford



The Lily House at the Botanic Garden

# Visiting the colleges and halls of the University of Oxford

## 1 All Souls College

High Street, tel: 279379 [www.all-souls.ox.ac.uk](http://www.all-souls.ox.ac.uk)  
**Open:** Sun–Fri 14.00–16.00. Closed in August, at Easter and from 22 Dec to early January  
**Charge:** Free  
**Note:** Maximum six people in a group

## 2 Balliol College

Broad Street, tel: 277777 [www.balliol.ox.ac.uk](http://www.balliol.ox.ac.uk)  
**Open:** Usually open 10.00–17.00 or dusk (whichever is earlier)  
**Charge:** Adults £2, concessions and students £1  
**Note:** Maximum 15 people in a group

## 3 Blackfriars

St Giles, tel: 278400  
**Open:** Blackfriars Church is open to the public daily in daylight hours

## 4 Brasenose College

Radcliffe Square, tel: 277830 [www.bnc.ox.ac.uk](http://www.bnc.ox.ac.uk)  
**Open:** Mon–Fri 10.00–11.30  
 Sat–Sun 9.00–10.30 (term time)  
 Sat–Sun 10.00–11.30 (vacations)  
 14.00–16.30 (17.00 in summer)  
**Charge:** £2 per person  
**Note:** Groups must book in advance. Maximum 40 people in a group

## 5 Campion Hall

Not open to the public

## 6 Christ Church

St Aldate's, tel: 286573, 276492 [www.chch.ox.ac.uk](http://www.chch.ox.ac.uk)  
**Open:** Mon–Sat 10.00–16.15, Sun 14.00–16.15.  
 Please see [www.chch.ox.ac.uk/cathedral](http://www.chch.ox.ac.uk/cathedral) for a schedule of daily services at the Cathedral.

**Charge:** November–February £7, concessions £6  
 March–June £8, concessions £7  
 July–August £9, concessions £8  
 September–October £8, concessions £7

**Note:** Group rates available for parties of 15 or more. Large parties may be split. Advance booking for groups is recommended, particularly in July and August. Guided tours are available and may be booked in advance via the Christ Church website. The visitor entrance to Christ Church (Meadow Gate) is accessed from St Aldate's through the Memorial Garden and Christ Church Meadow.

## 7 Corpus Christi College

Merton Street, tel: 276700 [www.ccc.ox.ac.uk](http://www.ccc.ox.ac.uk)  
**Open:** 13.30–16.30  
**Charge:** Free  
**Note:** Groups (max 20) must book in advance and be accompanied by a Blue Badge Guide

## 8 Exeter College

Turl Street, tel: 279600 [www.exeter.ox.ac.uk](http://www.exeter.ox.ac.uk)  
**Open:** Daily 14.00–17.00  
**Charge:** Free  
**Note:** Maximum 15 people in a group

## 9 Green Templeton College

Woodstock Road, tel: 271770 [www.gtc.ox.ac.uk](http://www.gtc.ox.ac.uk)  
**Open:** By appointment only  
**Note:** Maximum 20 people in a group  
 Graduate college

## 10 Harris Manchester College

Mansfield Road, tel: 271006 [www.hmc.ox.ac.uk](http://www.hmc.ox.ac.uk)  
**Open:** Chapel only  
 Mon–Fri 10.00–17.30, Sat 9.00–12.00  
**Charge:** Free, donations welcome  
**Note:** Groups must book in advance

## 11 Hertford College

Catte Street, tel: 279400 [www.hertford.ox.ac.uk](http://www.hertford.ox.ac.uk)  
**Open:** Daily 14.00–16.30  
**Charge:** Free  
**Note:** Maximum 10 people in a group. Larger groups must book in advance

## 12 Jesus College

Turl Street, tel: 279700 [www.jesus.ox.ac.uk](http://www.jesus.ox.ac.uk)  
**Open:** Daily 14.00–16.30  
**Charge:** Adults £3, seniors and children over 5 £1  
**Note:** Maximum 20 people in a group. Groups must book in advance

## 13 Keble College

Parks Road, tel: 272727 [www.keble.ox.ac.uk](http://www.keble.ox.ac.uk)  
**Open:** 14.00–17.00  
**Charge:** Free  
**Note:** Guided tours and groups of 8 or more must book in advance

## 14 Kellogg College

60–62 Banbury Road, tel: 612000 [www.kellogg.ox.ac.uk](http://www.kellogg.ox.ac.uk)  
**Open:** Mon–Fri 9.00–17.00  
**Charge:** Free  
**Note:** Graduate college committed to flexible learning

## 15 Lady Margaret Hall

Norham Gardens, tel: 274300 [www.lmh.ox.ac.uk](http://www.lmh.ox.ac.uk)  
**Open:** Daylight hours  
**Charge:** Free

## 16 Linacre College

St Cross Road, tel: 271650 [www.linacre.ox.ac.uk](http://www.linacre.ox.ac.uk)  
**Open:** By appointment only  
**Note:** Graduate college

## 17 Lincoln College

Turl Street, tel: 279800 [www.linc.ox.ac.uk](http://www.linc.ox.ac.uk)  
**Open:** Mon–Fri 14.00–17.00, Sat–Sun 11.00–17.00  
**Charge:** Free, donations welcome  
**Note:** Maximum six per group. No guided tour groups

The information given in this leaflet is intended for guidance only. Opening hours are subject to functions, examinations, conferences, holidays, etc., and charges are subject to review.

You are advised to check opening times and admission charges in advance. Groups should book in advance and all visitors should report to the Lodge on arrival. We want you to enjoy your visit, but please remember that our colleges and halls are places of residence, work and study, and you are asked not to enter staircases, rooms and areas marked as private. Dogs, except guide dogs, are not allowed in colleges and halls.

### 18 Magdalen College

High Street, tel: 276000 [www.magd.ox.ac.uk](http://www.magd.ox.ac.uk)  
Please check the website or contact the college for current information

### 19 Mansfield College

Mansfield Road, tel: 270999  
[www.mansfield.ox.ac.uk](http://www.mansfield.ox.ac.uk)  
Open: Mon–Fri 9.00–17.00  
Charge: Free, donations welcome  
Note: Groups (max 15) must be accompanied by a guide

### 20 Merton College

Merton Street, tel: 276310 [www.merton.ox.ac.uk](http://www.merton.ox.ac.uk)  
Open: Mon–Fri 14.00–17.00 (or dusk),  
Sat–Sun 10.00–17.00 (or dusk)  
Charge: Adults £3. Free to children. Free to University members and alumni (and up to three guests). Guided tours of college and medieval library £5 per person (summer only).  
Note: Groups of more than 8 must book in advance

### 21 New College

New College Lane, tel: 279555  
[www.new.ox.ac.uk](http://www.new.ox.ac.uk)  
Open: Easter–Oct 11.00–17.00 (via New College Lane Gates),  
Oct–Easter 14.00–16.00 (via Holywell Street Gates)  
Charge: Adults £4, concessions £3  
Entry is free to Oxford residents  
Note: Maximum 20 people in a group. Larger groups will need to split.

### 22 Nuffield College

New Road, tel: 278500 [www.nuffield.ox.ac.uk](http://www.nuffield.ox.ac.uk)  
Open: Mon–Fri 9.00–17.00  
Charge: Free  
Note: Maximum six people in a group  
Graduate college

### 23 Oriel College

Oriel Square, tel: 276555 [www.oriel.ox.ac.uk](http://www.oriel.ox.ac.uk)  
Open: 14.00–17.00 or dusk (whichever is earlier). Closed in Trinity (Summer) term  
Charge: Adults £2; concessions £1  
Guide books are available at £1 each  
Note: Maximum 12 people in a group

### 24 Pembroke College

Pembroke Square, tel: 276444 [www.pmb.ox.ac.uk](http://www.pmb.ox.ac.uk)  
Note: Pembroke College is only open to prospective students, alumni, members of the University or those with a connection to the college.

### 25 The Queen's College

High Street, tel: 279120 [www.queens.ox.ac.uk](http://www.queens.ox.ac.uk)  
Open: By appointment only  
Charge: Free

Note: Groups only, must be accompanied by a Blue Badge Guide booked through the Visitor Information Centre

### 26 Regent's Park College

Pusey Street, tel: 288120 [www.rpc.ox.ac.uk](http://www.rpc.ox.ac.uk)  
Open: By appointment only

### 27 St Anne's College

Woodstock Road, tel: 274800 [www.st-annes.ox.ac.uk](http://www.st-annes.ox.ac.uk)  
Open: 9.00–17.00  
Charge: Free

### 28 St Antony's College

Woodstock Road, tel: 284700 [www.sant.ox.ac.uk](http://www.sant.ox.ac.uk)  
Open: By appointment only  
Note: Graduate college

### 29 St Benet's Hall

Not open to the public

### 30 St Catherine's College

Manor Road, tel: 271700 [www.stcatz.ox.ac.uk](http://www.stcatz.ox.ac.uk)  
Open: Daily 9.00–17.00  
Charge: Free  
Note: Advance booking is required for groups of 10 or more. Please contact the Lodge

### 31 St Cross College

St Giles, tel: 278490 [www.stx.ox.ac.uk](http://www.stx.ox.ac.uk)  
Open: By appointment only  
Note: Graduate college

### 32 St Edmund Hall

Queen's Lane, tel: 279000 [www.seh.ox.ac.uk](http://www.seh.ox.ac.uk)  
Open: Daily 10.00–16.00  
Charge: Free  
Note: Maximum 12 people in a group.  
Larger groups by appointment

### 33 St Hilda's College

Cowley Place, tel: 276884 [www.st-hildas.ox.ac.uk](http://www.st-hildas.ox.ac.uk)  
Open: By appointment only  
Charge: Free

### 34 St Hugh's College

St Margaret's Road, tel: 274965  
[www.st-hughs.ox.ac.uk](http://www.st-hughs.ox.ac.uk)  
Open: Please check in advance  
Charge: Free, donations welcome

### 35 St John's College

St Giles', tel: 277300 [www.sjc.ox.ac.uk](http://www.sjc.ox.ac.uk)  
Open: 13.00–17.00 or dusk (if earlier)  
Charge: Free  
Note: Maximum 14 in a group, accompanied by a guide. Larger groups will be split

### 36 St Peter's College

New Inn Hall Street, tel: 278900 [www.spc.ox.ac.uk](http://www.spc.ox.ac.uk)  
Open: 10.00–17.00  
Charge: Free, donations welcome  
Note: Advance booking is required for groups of five or more

### 37 St Stephen's House

16 Marston Street, tel: 613500  
[www.ssho.ox.ac.uk](http://www.ssho.ox.ac.uk)  
Open: By appointment only  
Charge: Free, donations welcome  
Note: Please contact the College Secretary

### 38 Somerville College

Woodstock Road, tel: 274800  
[www.some.ox.ac.uk](http://www.some.ox.ac.uk)  
Open: 14.00–16.30  
Charge: Free, donations welcome  
Note: Large groups must book in advance

### 39 Trinity College

Broad Street, tel: 279900 [www.trinity.ox.ac.uk](http://www.trinity.ox.ac.uk)  
Open: Term Time: Mon–Fri 09.30–12.15,  
13.30–16.00  
Sat–Sun (during term) 13.00–16.00  
Sat–Sun (out of term) 09.30–16.00,  
Spring / summer open till dusk  
Charge: Adults £3, concessions £2. No charge for group leaders / teachers accompanying school groups (group only charged)

### 40 University College

High Street, tel: 276602 [www.univ.ox.ac.uk](http://www.univ.ox.ac.uk)  
Open: Outside term time only. 10.00–12.00;  
14.00–16.00  
Charge: Adults £2, concessions £1, children under 12 free  
Note: Large groups by arrangement

### 41 Wadham College

Parks Road, tel: 277900 [www.wadham.ox.ac.uk](http://www.wadham.ox.ac.uk)  
Open: Term time 13.00–16.15  
Vacation 10.30–11.45, 13.00–16.15  
Charge: Free  
Note: Guided groups are asked to notify the lodge on arrival

### 42 Wolfson College

Linton Road, tel: 274100 [www.wolfson.ox.ac.uk](http://www.wolfson.ox.ac.uk)  
Open: Daylight hours  
Charge: Free  
Note: Groups should notify the Lodge in advance of their visit. Graduate college

### 43 Worcester College

Worcester Street, tel: 278300 [www.worc.ox.ac.uk](http://www.worc.ox.ac.uk)  
Open: Daily 14.00–17.00  
Charge: Free  
Note: Maximum 6 people in a group

### 44 Wycliffe Hall

Banbury Road, tel: 274200  
[www.wycliffe.ox.ac.uk](http://www.wycliffe.ox.ac.uk)  
Open: By appointment  
Charge: Free

# Museums, University buildings and other places of interest

## A Ashmolean Museum

Beaumont Street, tel: 278000  
[www.ashmolean.org](http://www.ashmolean.org)  
Open: Tue–Sun 10.00–17.00  
Closed Mondays  
Bank Holiday Mondays 10.00–17.00  
Charge: Free  
Note: For group booking, tel 278015

## B Bate Collection of Musical Instruments

Faculty of Music, St Aldate's, tel: 276139  
[www.bate.ox.ac.uk](http://www.bate.ox.ac.uk)  
Open: Mon–Fri 14.00–17.00,  
Sat (term time only) 10.00–12.00  
Charge: Free

## C Bodleian Library

Broad Street, tel: 277094 [www.bodleian.ox.ac.uk](http://www.bodleian.ox.ac.uk)  
Email: [tours@bodleian.ox.ac.uk](mailto:tours@bodleian.ox.ac.uk)  
Open: Mon–Fri 9.00–17.00,  
Sat 9.00–16.30, Sun 11.00–17.00  
Charge: Free access to the Old Schools Quadrangle, Proscholium display and Shop. Daily admission to the Divinity School. Multi-language audio tours and daily guided tours of the Library are available. Groups need to book in advance. See website for bookings and ticket prices. Admission free to alumni, Bodleian cardholders and Friends of the Bodleian. Up to four guests will also be admitted free.

## D Botanic Garden

High Street, tel: 286690  
[www.botanic-garden.ox.ac.uk](http://www.botanic-garden.ox.ac.uk)  
Open: Daily from 9.00 (12.00 Mondays), seasonal closing times, last admission 45 minutes before closing time  
Charge: Adults £5, concessions £3.50, season tickets available. Entry is free to children under 18 (when accompanied by a family member), registered disabled visitors and their carers, University and OUP employees, Oxford and Oxford Brookes students.  
Note: **Harcourt Arboretum** is a short drive out of Oxford. Visit [harcourt-arboretum.ox.ac.uk](http://harcourt-arboretum.ox.ac.uk) or call 343501 for more information.

## E Christ Church Picture Gallery

Entrance via Oriel Square, tel: 276172  
[www.chch.ox.ac.uk/gallery](http://www.chch.ox.ac.uk/gallery)  
Open: Gallery closed Tuesdays Oct–June  
October–May: Mon, Wed–Sat 10.30–13.00, 14.00–16.30, Sun 14.00–16.30  
June: Mon, Wed–Sat 10.30–17.00, Sun 14.00–17.00  
July–September: Mon–Sat 10.30–17.00, Sun 14.00–17.00  
Charge: Adults £4, concessions £2, University members free  
Note: If you pay to visit Christ Church, you are entitled to a 50% reduction on the Gallery entrance charge. All groups should book in advance.

## F Museum of the History of Science

Broad Street, tel: 277280 [www.mhs.ox.ac.uk](http://www.mhs.ox.ac.uk)  
Open: Tue–Sun 12.00–17.00  
Charge: Free  
Note: Advance booking for groups of 15+

## G OUP Bookshop

116/117 High Street, tel: 242913  
[www.facebook.com/oxforduniversitypressbookshop](http://www.facebook.com/oxforduniversitypressbookshop)  
Open: Sept–June: Mon 10.00–17.30,  
Tue–Sat 9.00–17.30, Sun 11.00–17.00  
July–Aug: Mon 10.00–19.00,  
Tue–Sat 9.00–19.00, Sun 11.00–17.00

## H Pitt Rivers Museum

South Parks Road, tel: 270927 [www.prm.ox.ac.uk](http://www.prm.ox.ac.uk)  
Entry is via the Museum of Natural History, Parks Road  
Open: Tues–Sun and Bank Holiday Mondays 10.00–16.30, Mon 12.00–16.30  
Check website for Christmas and Easter opening  
Charge: Free  
Note: All groups should book in advance

## I Sheldonian Theatre

Broad Street, tel: 277299 [www.ox.ac.uk/sheldonian](http://www.ox.ac.uk/sheldonian)  
Open: Mon–Sat 10.00–16.30 (15.30 in winter)  
Charge: Adults £3.50, concessions and groups £2.50  
Note: Opening hours vary when the theatre is in use for ceremonies, meetings or concerts.

## J University Church of St Mary the Virgin

High Street, tel: 279111  
[www.university-church.ox.ac.uk](http://www.university-church.ox.ac.uk)  
Offers excellent panoramic views of Oxford  
Open: Mon–Sat 9.00–17.00 (July/Aug 18.00)  
Sun 12.00–17.00 (July/Aug 18.00)  
Coffee shop with garden, serving organic food, 8.00–18.00  
Charge: For the tower only: £4 adults, £3 children and concessions, £12 families.  
Note: Entrance to the church is free. Principal Sunday service is Eucharist at 10.30.

## K University Museum of Natural History

Parks Road, tel: 272950 [www.oum.ox.ac.uk](http://www.oum.ox.ac.uk)  
Open: Daily 10am–5pm  
Charge: Free  
Note: All groups should book in advance

## L University Parks

Parks Road, tel: 282040 [www.parks.ox.ac.uk](http://www.parks.ox.ac.uk)  
Open: 7.45 (closing times vary)  
Charge: Free

## M University of Oxford Shop

106 High Street, tel: 247414 [www.oushop.com](http://www.oushop.com)  
The University of Oxford's official store selling a wide range of stylish gifts, clothing and more.  
Open: Mon–Sat 9.00–17.30, Sun 11.00–17.00  
Summer Mon–Sat 9.00–18.30, Sun 11.00–17.00

## N Visitor Information Centre

Broad Street, tel: 686430  
[www.visitorfordandoxfordshire.com](http://www.visitorfordandoxfordshire.com)  
Open: See panel for opening times

## O Weston Library

Broad Street, tel: 277094  
Open: **Blackwell Hall and Café:**  
Mon–Fri 8.30–17.00  
Sat 9.00–17.00  
Sun 11.00–17.00  
**Exhibitions:**  
Mon–Sat 10.00–17.00  
Sun 11.00–17.00  
**Shop:**  
Mon–Fri 10.00–17.30  
Sat 10.00–17.00  
Sun 11.00–17.00  
Charge: Free

## 1 University Offices

Wellington Square, tel: 270098  
[www.admin.ox.ac.uk](http://www.admin.ox.ac.uk)

The telephone area code for Oxford is 01865

Opening times are subject to University functions, bank holidays, conferences, etc. Please check with the place you wish to visit. Charges and opening hours are subject to change.

Cycladic figurine from the Ashmolean Museum

